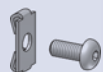




# ACCESSORIES 5



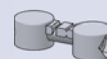
PAGE 138



PAGE 138



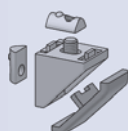
PAGE 139



PAGE 139



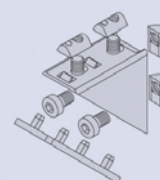
PAGE 140



PAGE 140



PAGE 141



PAGE 141



PAGE 142



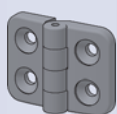
PAGE 142



PAGE 143



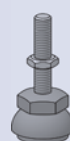
PAGE 144



PAGE 144



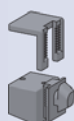
PAGE 145



PAGE 145



PAGE 146



PAGE 146



PAGE 147



PAGE 147

## Central plate set 5

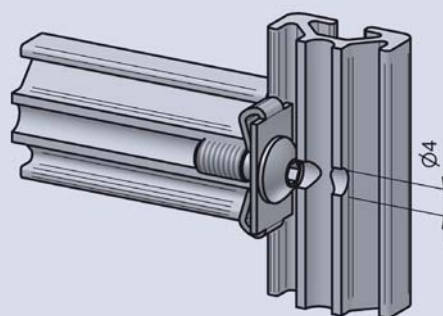
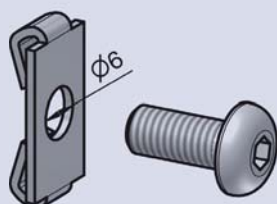
ORDER N°. ZENSTZ5.

Steel/galvanised m=4g/pc.

Scope of delivery:

- 1 Basic element Steel galvanised
- 1 Half-round screw M5x12 Steel galvanised

Non-positive profile connector. Easy to use and little outlay (screws / through-drill) for both of these connecting profiles. The type of connection cannot be retrospectively built into an existing frame construction and there is only minimal room for play. The recommended tightening force is 4.5 Nm.



## Screw in connector set 5

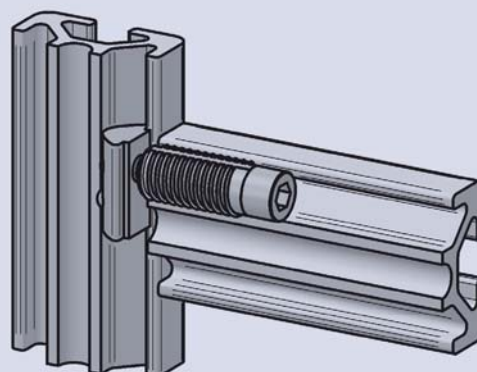
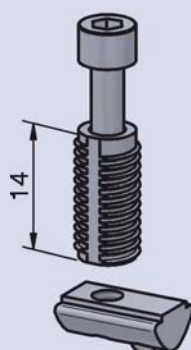
ORDER N°. EINSTZ5.

Steel/galvanised m=6g/pc. Fmax=250N

Scope of delivery:

- 1 Basic element Steel galvanised
- 1 Cylinder head screw M5 special Steel galvanised
- 1 roove stone 5 M4 with base Steel galvanised

Force-fit self securing profile connector. Simple application and lowest processing effort (no machining necessary). The profiles can be set continuously in their locations and can also subsequently be built into existing constructions. This connection technique is very often used with on location assembly. The recommended tightening torque is 3 Nm.





## Universal Connector set 5

ORDER N°. UNISTZ5.

ZDc/galvanised m=7g/pc.

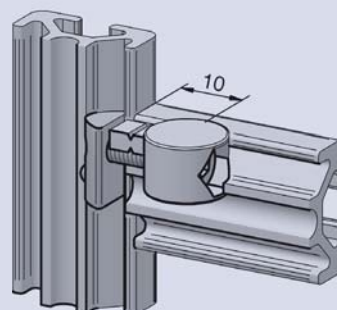
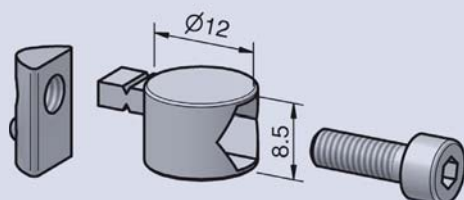
Scope of delivery:

1 Basic element ZDc

1 Cylinder head screw M4x14 Steel galvanised

1 Sliding block 5 M4 Steel galvanised

Non-positive profile connector. Easy to use and little outlay (variable drilling in one of the connecting profiles). The profiles can be variably set in their positions and can be retrospectively built into existing constructions. To guarantee an optimal fastening hold, these connectors should always be built in pairs. Twisting protection can be interrupted. The recommended tightening force is 3 Nm.



## Universal butt connector set 5

ORDER N°. UNISTOSTZ5.

ZDc/galvanised m=10g/pc.

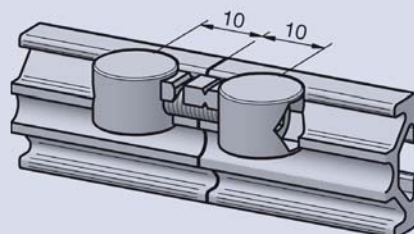
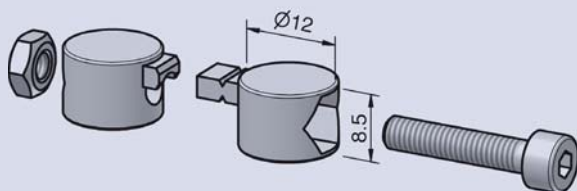
Scope of delivery:

2 Basic element ZDc

1 Cylinder head screw M4x20 Steel galvanised

1 Hexagon nut M4 Steel galvanised

Non-positive profile/joint connector. Simple to use and little outlay (only one drill per profile). These connectors are used if the profile production length is not enough and a joint proves unavoidable. To guarantee an optimal fastening hold, these connectors should be built in pairs. The recommended tightening force is 3 Nm.



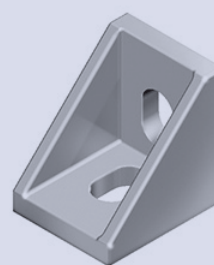
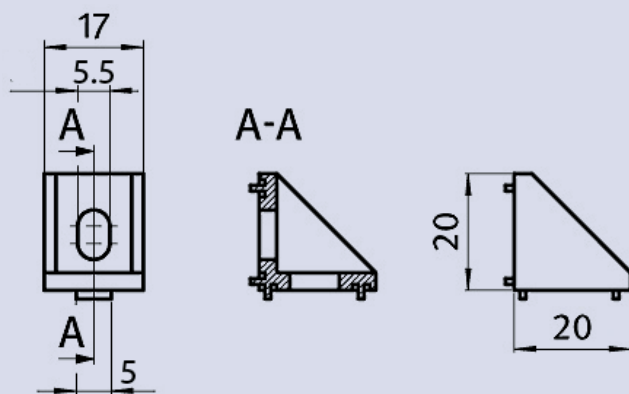
# ACCESSORIES 5

## Angle 5 20x20 Zn

ORDER N°. WIN5.2020ZN

ZDc m=13g/pc.

Angle for non-positive reinforcement of profile connections and for attaching components to profile constructions. When assembling surfaces the groove ledgers can be broken off.



## Angle set 5 20x20 Zn

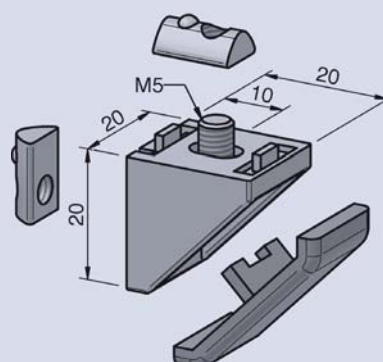
ORDER N°. WINSTZ5.2020ZN

ZDc m=23g/pc.

Scope of delivery:

- 1 Angle 5 20x20 Zn
- 2 Half-round screw M5x8 Steel galvanised
- 2 Sliding block 5 M5 Steel galvanised
- 1 Covering cap for angle 5 20x20 PA black

Angle for non-positive reinforcement of profile connections and for attaching components to profile constructions. When assembling surfaces the groove ledgers can be broken off.



# ACCESSORIES 5



## Connector set 5 R20 90°

ORDER N°. VERSTZ5.R2090

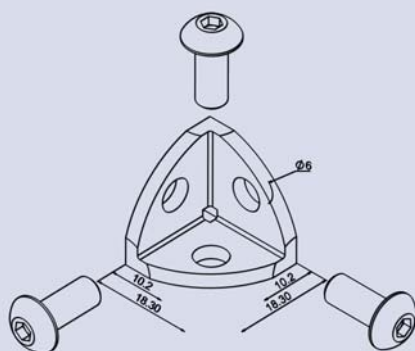
ZDc bright m=21g/pc.

Scope of delivery

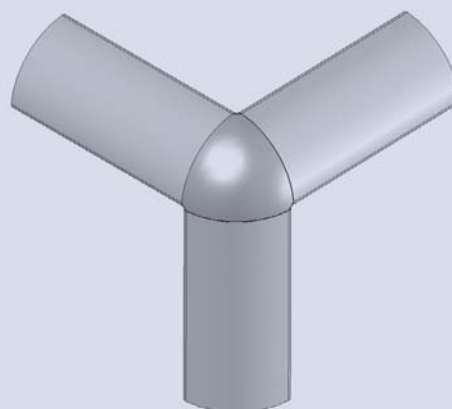
1 Angle 5 R20 90°

3 Half-round screw M5x12 Steel galvanised

1 Angle-Covering cap 5 20 90° PA black



Element for connecting nodes of up to three same profiles. The special covering cap is used to cover all profile ends therefore improving the appearance and twist-safety of the connections.



## Angle set 5 40x40 Zn

ORDER N°. WINSTZ5.2020ZN

ZDc m=58g/pc.

Scope of delivery:

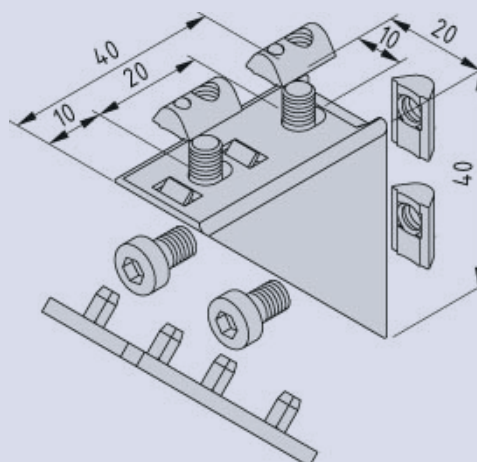
1 Angle 5 40x40 Zn

4 Half-round screw M5x8 Steel galvanised

4 Sliding block 5 M5 Steel galvanised

1 Covering cap for angle 5 40x40 PA black

Angle for non-positive reinforcement of profile connections and for attaching components to profile constructions. When assembling surfaces the groove ledgers can be broken off.





## Sliding block 5 M3 steel

ORDER N°. NUT5.M3ST

Steel/galvanised m=2g/pc.

Universal sliding attachment element. The sliding block can be slewed in at any point along the profile groove. Self-fixing through spring-mounted ball.

## Sliding block 5 M4 steel

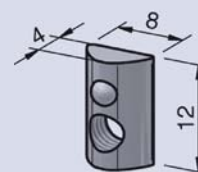
ORDER N°. NUT5.M4ST

Steel/galvanised m=2g/pc.

## Sliding block 5 M5 steel

ORDER N°. NUT5.M5ST

Steel/galvanised m=2g/pc.



## Sliding block 5 M3 steel with ridge

ORDER N°. NUT5.M3STS

Steel/galvanised m=2g/pc.

Universal sliding connection element with ridge for automatic positioning which guarantees an optimal bearing surface and prevents it from falling out when adjustments are made. The sliding block can be slewed in at any point along the groove. Self-fixing through spring-mounted ball.

## Sliding block 5 M4 steel with ridge

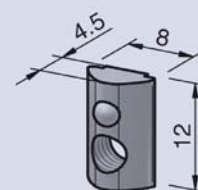
ORDER N°. NUT5.M4STS

Steel/galvanised m=2g/pc.

## Sliding block 5 M5 steel with ridge

ORDER N°. NUT5.M5STS

Steel/galvanised m=2g/pc.





## Covering cap 5 20x10

ORDER N°. ABD5.2010

PA/black m=0,6g/pc.

## Covering cap 5 20x20

ORDER N°. ABD5.2020

PA/black m=1,2g/pc.

## Covering cap 5 40x10

ORDER N°. ABD5.4010

PA/black m=1g/pc.

## Covering cap 5 40x20

ORDER N°. ABD5.4020

PA/black m=2,2g/pc.

## Covering cap 5 40x40

ORDER N°. ABD5.4040

PA/black m=5g/pc.

## Covering cap 5 80x20

ORDER N°. ABD5.8020

PA/black m=4,4g/pc.

## Covering cap 5 R20 90°

ORDER N°. ABD5.R2090

PA/black m=1g/pc.

## Covering cap for boring 5 mm silver

ORDER N°. ABDB0H5

PA/silver (RAL9006) m=1g/pc.

Profile cap rounded off on front side. Prevents dirt from entering, avoids injuries/cuts and is also a decorative end to the profile cap. Deburring the cut edge of the profile is unnecessary. Attach by pressing onto profile face.





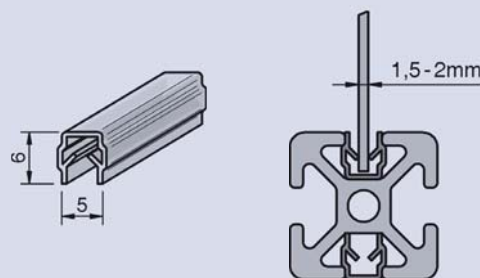
# ACCESSORIES 5

## Covering-/Bordering profile 5 PP natural

ORDER N°. ABDEIN5.PPN

PP/natural m=13,5g/m

1.5mm to 2mm thick plastic element to cover profile groove or to form the edge of surfaces. Assembled by pressing into profile groove.



## Covering-/Bordering profile 5 PP black

ORDER N°. ABDEIN5.PPS

PP/black m=13,5g/m

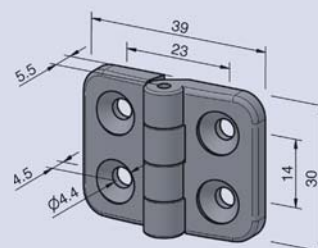
## Hinge 5 PA

ORDER N°. SCH5.PA

PA/black m=8g/pc. F<sub>Amax</sub>=200N

F<sub>rmax</sub>=400N

Plastic hinge that cannot be unhinged; for small doors and movable attachments. Can be used on left and right side.



# ACCESSORIES 5

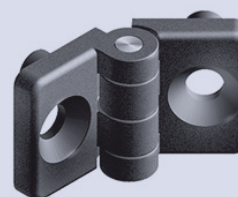
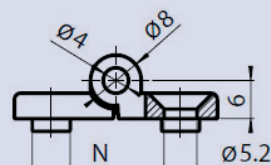
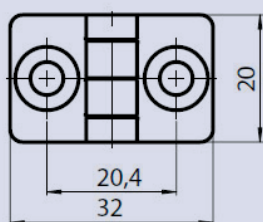


## Hinge 5 PA 2-bolt mounting system

ORDER N°. SCH5.PALOC20

PA/black	m = 5g/pc.	FMax=240N
		FRmax=300N

Plastic hinge that cannot be unhinged; for small doors and movable attachments. Can be used on left and right side.



## Foot 5 20 M5x25

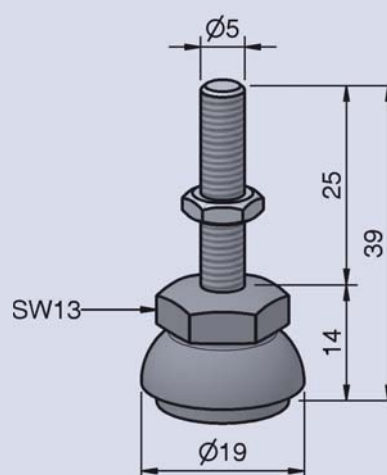
ORDER N°. STE5.20M525

PA/black	m=8g/pc.	Fmax=1000N
----------	----------	------------

Scope of delivery:

- 1 Basic element PA black
- 1 Threaded bolt for foot M5 Steel galvanised
- 1 Hexagon nut M5 Steel galvanised

Infinitely variable height adjustable small foot without tilting correction but with glued-on anti-slip pad.



# ACCESSORIES 5

## Uniblock 5 6 mm PA

ORDER N°. UNI5.6PA

PA/black m=3g/pc. Fmax=150N

## Distance plate for uniblock 5 1 mm

ORDER N°. DISUNI5.1

PA/black m=0,5g/pc.

## Distance plate for uniblock 5 2 mm

ORDER N°. DISUNI5.2

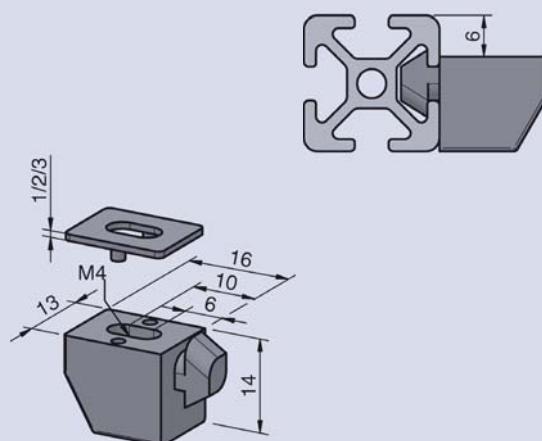
PA/black m=1g/pc.

## Distance plate for uniblock 5 3 mm

ORDER N°. DISUNI5.3

PA/black m=1,5g/pc.

Universal attachment piece for surfaces and smaller attachments. Attach by pressing into profile groove and turning by 90°. The distance plates (various thicknesses) can be plugged in and are self-fixing and can be used to set the distance between the surface element and profile edge.



## Clamping-Multiblock 5 6 mm PA

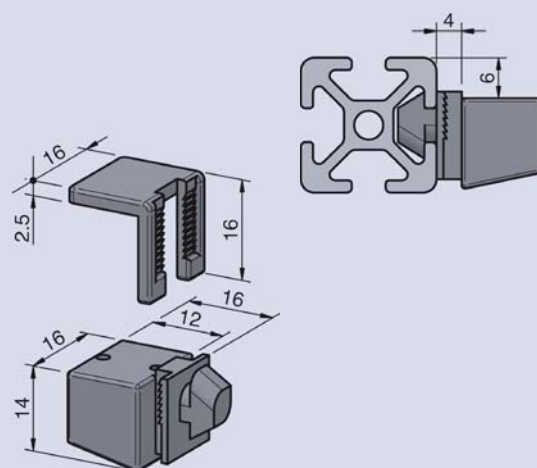
ORDER N°. KLEMUL5.6PA

PA/black m=3g/pc. Fmax=150N

Scope of delivery:

- 1 Basic element PA black
- 1 Angle support PA black

Attachment element for surfaces of different thicknesses. Attach by pressing into profile groove and turning by 90°. The surface element is attached by pressing the grid bracket. It is therefore possible to build in precut parts without extra work.



# ACCESSORIES 5

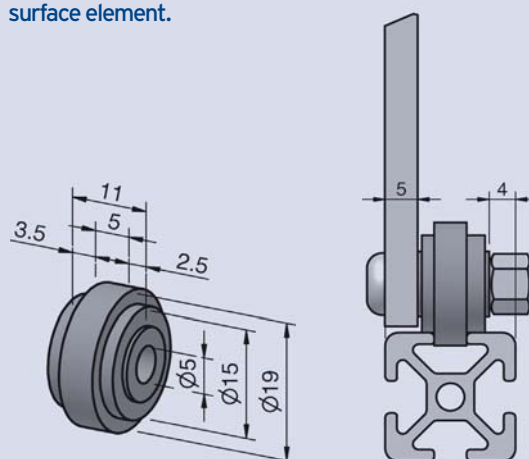


## Roller 5 PA

ORDER N°. ROL5.PA

PA/black m=5g/pc. Fmax=50N

Universally applicable wheel that is guided into profile grooves. Its asymmetrical construction means that different types of construction are possible. It is mostly used for sliding doors or lift doors of a light construction. The doors can be used without profile frames by assembling the wheels directly on to the surface element.



## Half-round screw M5x8

ORDER N°. HALM58

Steel 10.9/galvanised m=2g/pc.

Recommended screw form for most connection types. Other dimensions are available on request.

## Half-round screw M5x12

ORDER N°. HALM512

Steel 10.9/galvanised m=2g/pc.

## Half-round screw M5x12 stainless steel

ORDER N°. HALM512ROS

Stainless steel m=2g/pc.

## Half-round screw M5x16

ORDER N°. HALM516

Steel 10.9/galvanised m=3g/pc.

## Half-round screw M5x20

ORDER N°. HALM520

Steel 10.9/galvanised m=3g/pc.

